

portfolio  
**Susannah  
Hays**

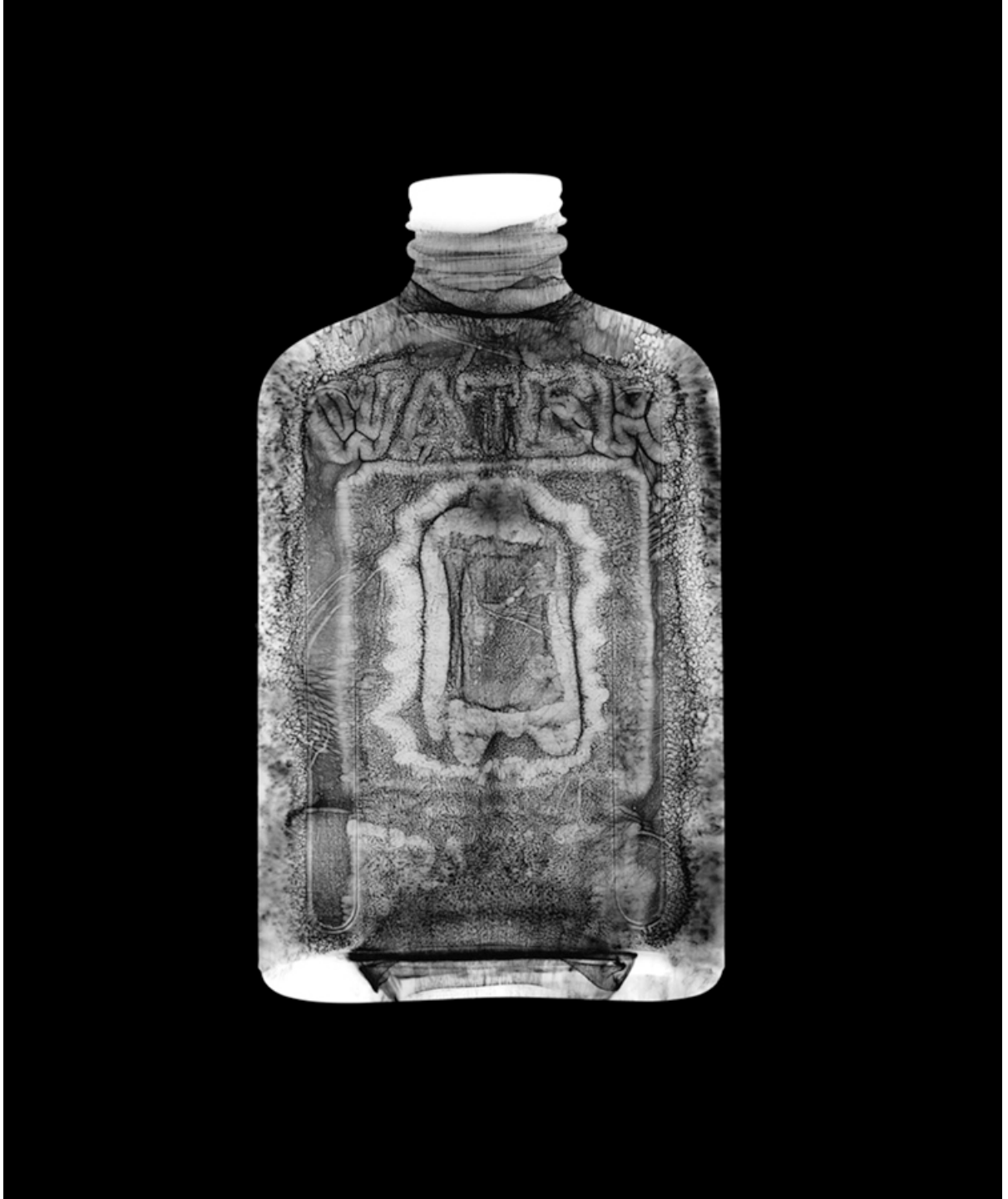


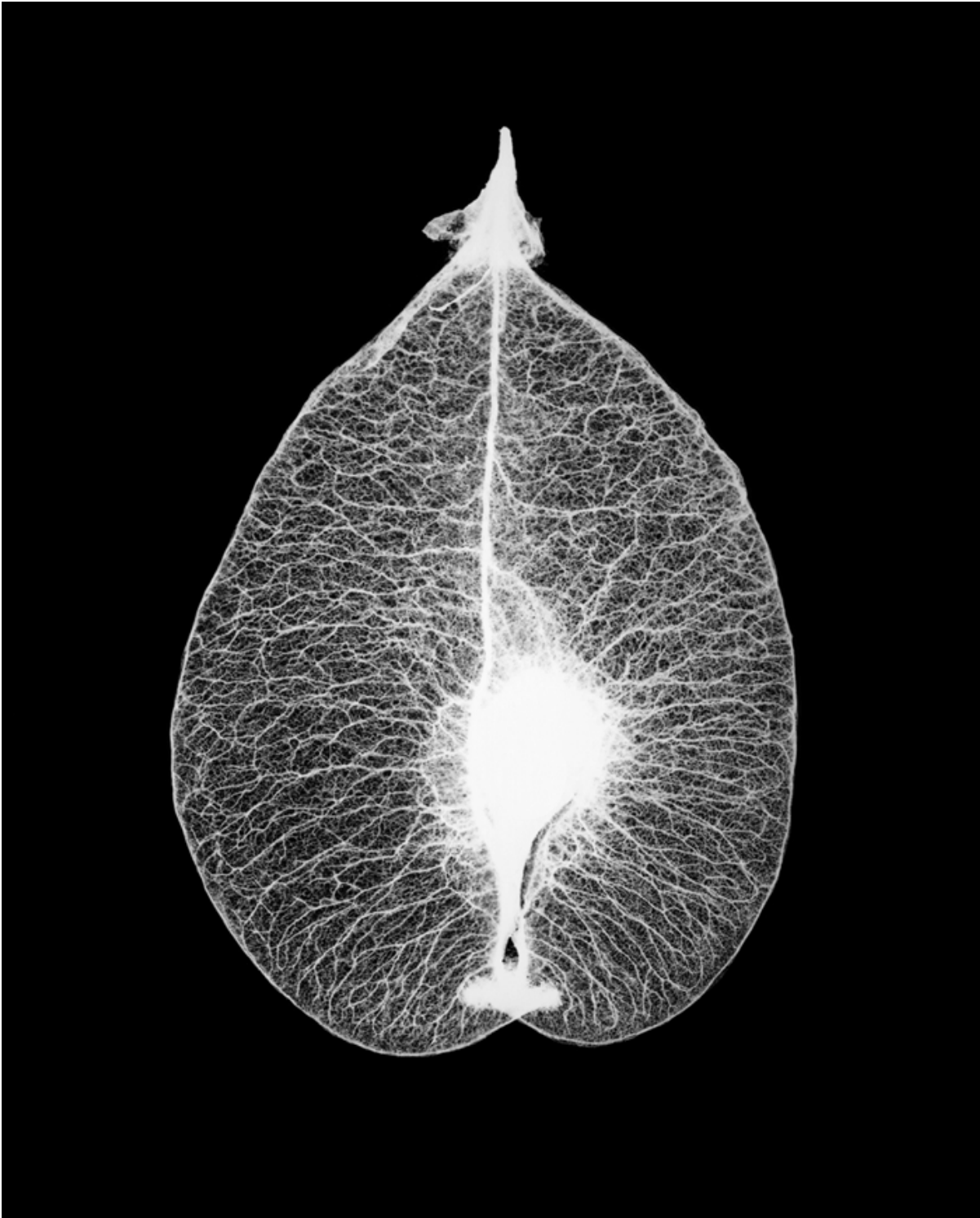
ABOVE: EMPTY BOTTLE NO.1 1998 GELATIN SILVER PHOTOGRAM, 20" X 16"

LEFT: IVY LEAF (HEARTS) 2003 GOLD-TONED SUN PRINT, 14" X 11" (UNIQUE HELIOGRAM)

*"We are each born at a certain instant from a seed and just as sure as the solar and lunar systems cycle around us, we inherit our ancestral lineage—the blueprint / membrane of our own being." —Susannah Hays, May 2000*

The images reproduced here were made without a camera. Just light and the thing itself were used in relation to pieces of light-sensitive paper. *Fiat Lux*. The leaf at the left was exposed by direct sunlight, whereas the light for the other images came from light emanating from heated elements, from lamp bulbs of one kind or another. Spending some time with these images, it occurred to me suddenly to wonder, was everything originally generated from light? - rw





ABOVE: *SEED LEAF* 2000 GELATIN SILVER PHOTOGRAM, 20" X 16"

LEFT: *EMPTY BOTTLE* No. 5 1998 GELATIN SILVER PHOTOGRAM, 20" X 16"